

MIKKEL ØRSTED

SIGNS AND ECHOES

ENG

Exhibition period: August 21- September 27, 2025

For his solo exhibition Signs and Echoes, artist Mikkel Ørsted presents new monotypes alongside large-scale ceramic sculptures – two distinct bodies of work that both mirror and challenge each other. The towering ceramics dominate the space, impressive in height, mass, and balance, while the monotypes appear ethereal, flickering, and impressionistic. Each piece bears the unmistakable traces of Ørsted's signature symbols and ornamental vocabulary.

In recent years, Ørsted has pushed the boundaries of ceramic art through his monumental and unconventionally glazed sculptures. This exhibition is no exception.

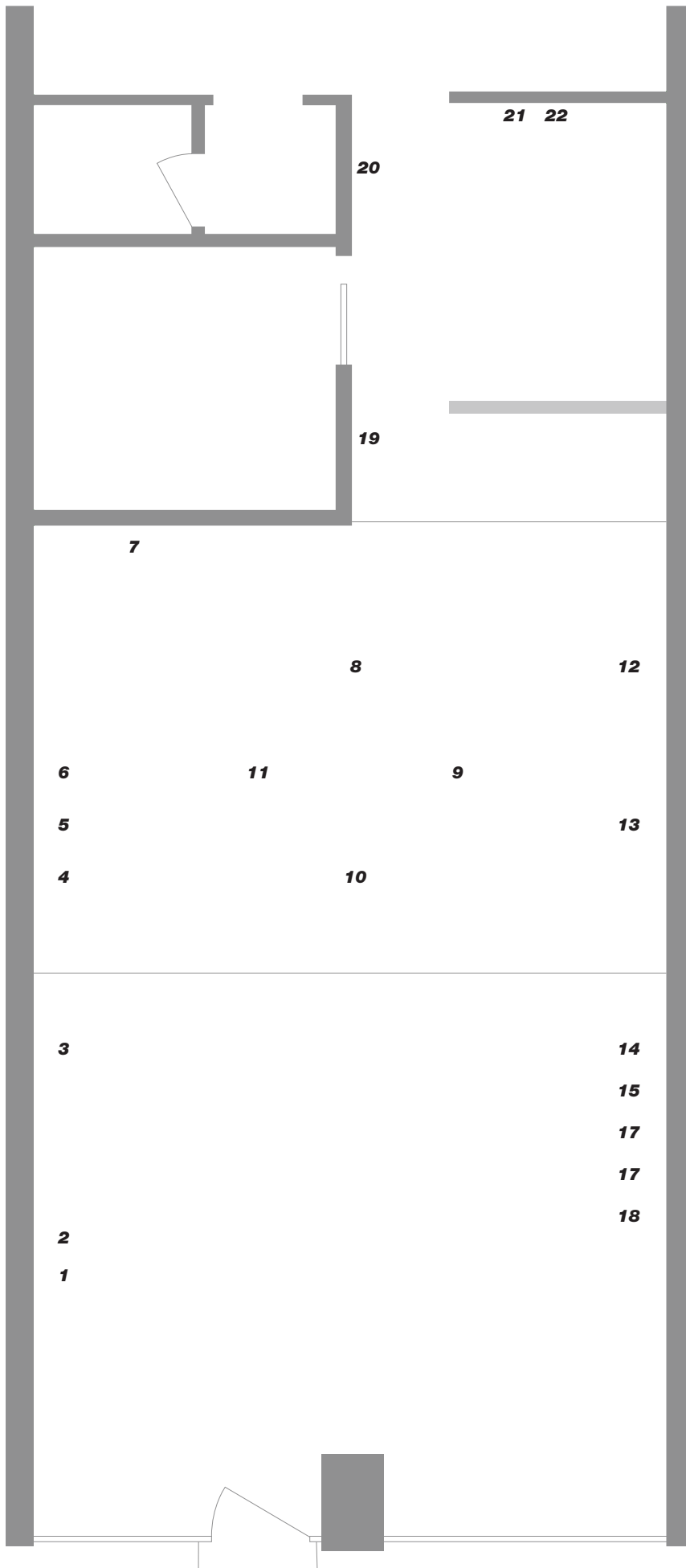
The sculptures, which premiered at Viborg Kunsthall in 2024, are constructed from more than a hundred individually fired and decorated clay panels and elements, built on iron frames. They reach upward like whimsical, towering tile stoves, and their aesthetics move effortlessly through the traditions of ceramic history: classical blue-and-white floral motifs connect with crackled glazes in bubblegum pink. With these visual contrasts, Ørsted not only challenges aesthetic conventions and hierarchies, but the works also appear unbound by gravity or the limits of clay. The work is impressive, demanding, and much of the process exists within the unknown – as the firing of the clay controls the final outcome. They beg the question: Could the work push further, reach higher, break more boundaries? As a result, the exhibition stands as a rich field of aesthetic experiments, exploring art history's norms for beauty and the excessive.

When turning our attention from the sculptures to the delicate, near-impressionist monotypes, it becomes clear how embedded and intuitive Ørsted's own visual language is in his mind and practice.

In contrast to the long, heavy, and thoughtful creation process of the ceramics, the monotypes are created fast, freely – almost as direct imprints of Ørsted's inner unconscious mind.

They unfold across the gallery walls like an elaborate landscape of recognizable patterns and ornamentations. Each work is unique, built from repeated, hand-painted printing plates, combined in ever-changing constellations. Through layers of paint, Ørsted constructs finely drawn lines, swift gestures, and soft organic forms – echoes of familiar landscapes and architecture. There's a soft, almost spellbinding beauty to them, inviting the viewer into dreamlike narratives where animals, flowers, and plants are animated, and the laws of physics are always negotiable.

These new works refine Ørsted's long-standing interest in systems, vibration, nature, and philosophy. Most pieces are composed of multiple elements – shifted, recombined, and reimaged. There is always something beneath the surface: a structure beneath the structure, an image behind the image.



1. Untitled, 2025

Monotype
Plate size: 18 x 14,5 cm - Paper size: 38 x 29 cm
Frame size: 43 x 33,5 cm

2. Untitled, 2025

Monotype
Plate size: 18 x 14,5 cm - Paper size: 38 x 29 cm
Frame size: 43 x 33,5 cm

3. Untitled, 2025

Monotype
Plate size: 18 x 14,5 cm - Paper size: 38 x 29 cm
Frame size: 43 x 33,5 cm

4. Untitled, 2025

Monotype
Plate size: 38 x 30 cm - Paper size: 66 x 50 cm
Frame size: 72 x 55 cm

5. Untitled, 2025

Monotype
Plate size: 38 x 30 cm - Paper size: 66 x 50 cm
Frame size: 72 x 55 cm

6. Untitled, 2025

Monotype
Plate size: 38 x 30 cm - Paper size: 66 x 50 cm
Frame size: 72 x 55 cm

7. Untitled, 2025

Monotype
Plate size: 38 x 30 cm - Paper size: 66 x 50 cm
Frame size: 72 x 55 cm

8. Untitled, 2024

Ceramics and steel
245 x 60 x 36 cm

9. Untitled, 2024

Ceramics and steel
250 x 60,5 x 33 cm

10. Untitled, 2024

Ceramics and steel
243 x 60,5 x 36,5 cm

11. Untitled, 2024

Ceramics and steel
260 x 61,5 x 38 cm

12. Untitled, 2025

Monotype
Plate size: 38 x 30 cm - Paper size: 66 x 50 cm
Frame size: 72 x 55 cm

13. Untitled, 2025

Monotype
Plate size: 38 x 30 cm - Paper size: 66 x 50 cm
Frame size: 72 x 55 cm

14. Untitled, 2025

Monotype
Plate size: 46,5 x 11,5 cm - Paper size: 75 x 28,5 cm
Frame size: 80 x 33,5 cm

15. Untitled, 2025

Monotype
Plate size: 46,5 x 11,5 cm - paper size: 75 x 28,5 cm
Frame size: 80 x 33,5 cm

16. Untitled, 2025

Monotype
Plate size: 46,5 x 11,5 cm - Paper size: 75 x 28,5 cm
Frame size: 80 x 33,5 cm

17. Untitled, 2025

Monotype
Plate size: 46,5 x 11,5 cm - Paper size: 75 x 28,5 cm
Frame size: 80 x 33,5 cm

18. Untitled, 2025

Monotype
Plate size: 46,5 x 11,5 cm - Paper size: 75 x 28,5 cm
Frame size: 80 x 33,5 cm

19. Untitled, 2025

Monotype
Plate size: 38 x 30 cm - Paper size: 66 x 50 cm
Frame size: 72 x 55 cm

20. Untitled, 2025

Monotype
Plate size: 19 x 27 cm - Paper size: 35 x 50 cm
Frame size: 40,5 x 55 cm

21. Untitled, 2025

Monotype
Plate size: 38 x 30 cm - Paper size: 66 x 50 cm
Frame size: 72 x 55 cm

22. Collection of ceramics

Variable sizes